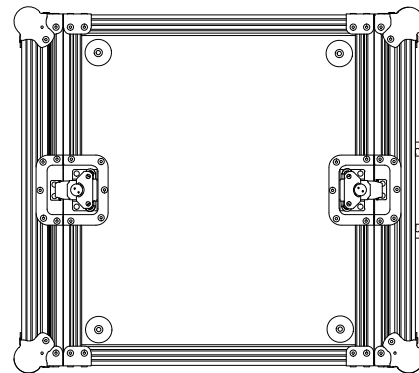
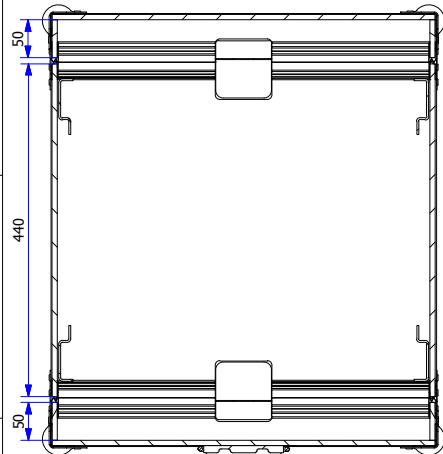
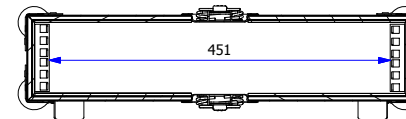


A-A (1 : 10)



B-B (1 : 10)



External Dimensions (excluding hardware): 510W x 573D x 114 H

Parts List	
QTY	DESCRIPTION
16	L-Bracket 4043
8	Medium Ball Corner 4120
4	Medium Padlocking Butterfly Catch L908/915/07
4	Double Full Hole Rackstrip R0883
4	38mm Rubber Foot
1	Surf Flip Handle H1052
1	Dragon Badge

Drawing no: F192USTD  
 Title: 2u Standard 19" Rack Flightcase with 440mm Sleeve

Figure: 1  
 Sheet: 1

Wall Thickness: 7mm  
 Drawn by: J.B.  
 Date: 08/10/2008

Wall Colour/Material: 7mm Laminated ply/Astraboard  
 Company: AN Other

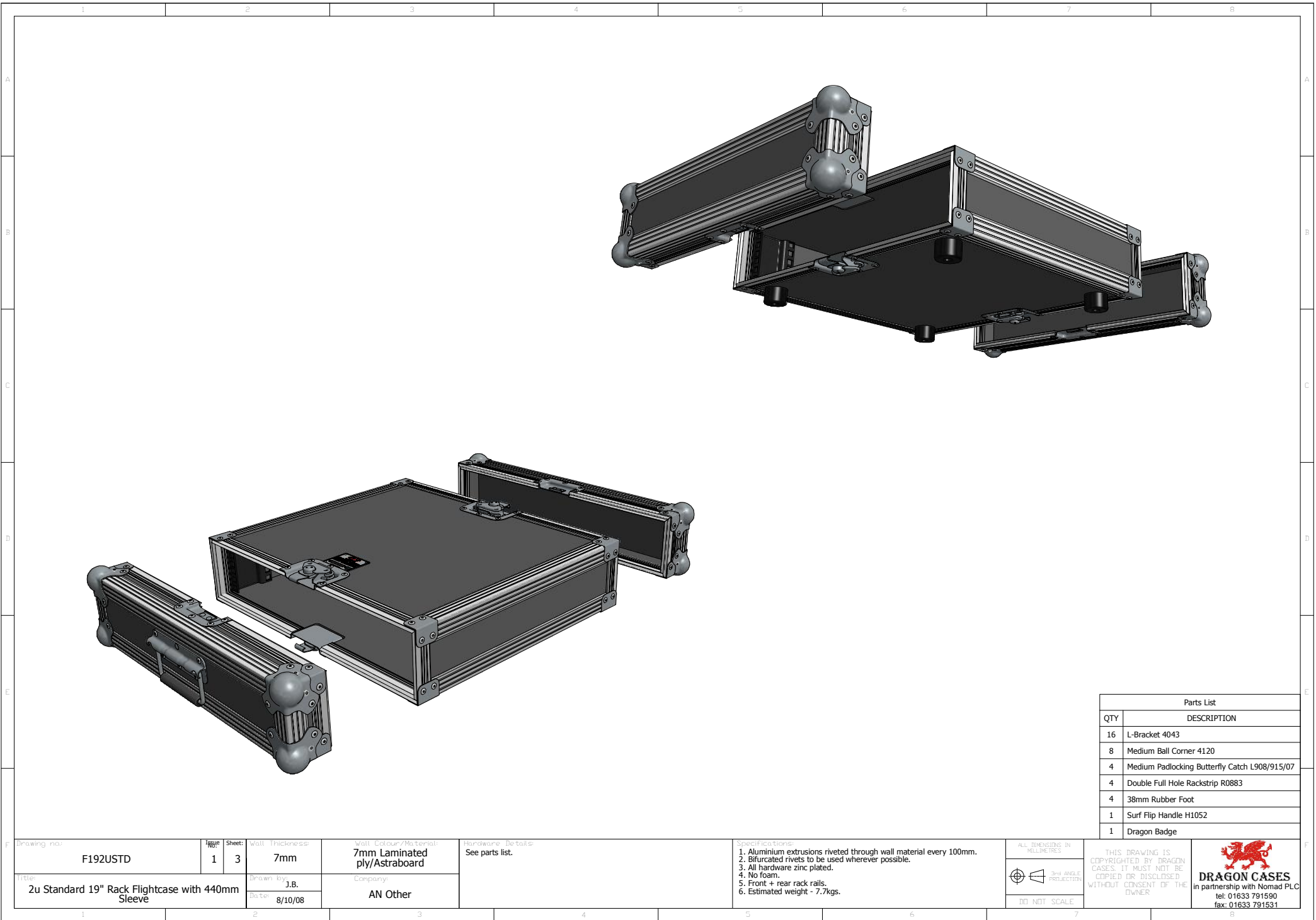
Hardware Details: See parts list.

Specifications:  
 1. Aluminium extrusions riveted through wall material every 100mm.  
 2. Bifurcated rivets to be used wherever possible.  
 3. All hardware zinc plated.  
 4. No foam.  
 5. Front + rear rack rails.  
 6. Estimated weight - 7.7kgs.

ALL DIMENSIONS IN MILLIMETRES  
  
 DO NOT SCALE

THIS DRAWING IS COPYRIGHTED BY DRAGON CASES. IT MUST NOT BE COPIED OR DISCLOSED WITHOUT CONSENT OF THE OWNER

**DRAGON CASES**  
 in partnership with Nomad PLC  
 tel: 01633 791590  
 fax: 01633 791531



Parts List	
QTY	DESCRIPTION
16	L-Bracket 4043
8	Medium Ball Corner 4120
4	Medium Padlocking Butterfly Catch L908/915/07
4	Double Full Hole Rackstrip R0883
4	38mm Rubber Foot
1	Surf Flip Handle H1052
1	Dragon Badge

Drawing no:	Figure:	Sheet:	Wall Thickness:	Wall Colour/Material:	Hardware Details:
F192USTD	1	3	7mm	7mm Laminated ply/Astraboard	See parts list.
Title:	Drawn by:	Company:	Date:		
2u Standard 19" Rack Flightcase with 440mm Sleeve	J.B.	AN Other	8/10/08		

Specifications:

1. Aluminium extrusions riveted through wall material every 100mm.
2. Bifurcated rivets to be used wherever possible.
3. All hardware zinc plated.
4. No foam.
5. Front + rear rack rails.
6. Estimated weight - 7.7kgs.

ALL DIMENSIONS IN MILLIMETRES

DO NOT SCALE

THIS DRAWING IS COPYRIGHTED BY DRAGON CASES. IT MUST NOT BE COPIED OR DISCLOSED WITHOUT CONSENT OF THE OWNER

**DRAGON CASES**  
in partnership with Nomad PLC  
tel: 01633 791590  
fax: 01633 791531